

**DOMAIN 4  
EDUCATION AND  
AWARENESS**

**PAUL GOW  
& ELAINE MONTEGRIFFO**

# WHAT WE KNOW ABOUT WHAT PEOPLE *DON'T* KNOW

- Only 5% of people with MASLD are aware of the diagnosis<sup>1</sup>
- Diagnosis made in 20% of people<sup>2</sup>
- GP estimate prevalence at <10% of population<sup>3</sup>
- 44% of GP's do not refer on patients with MASLD<sup>3</sup>
- >75% of GP's do not use tests to measure scarring<sup>3</sup>

1: Le 2020, J Int Med

2: Alexander M, 2018, BMC

3: Patel 2018, Int Med J

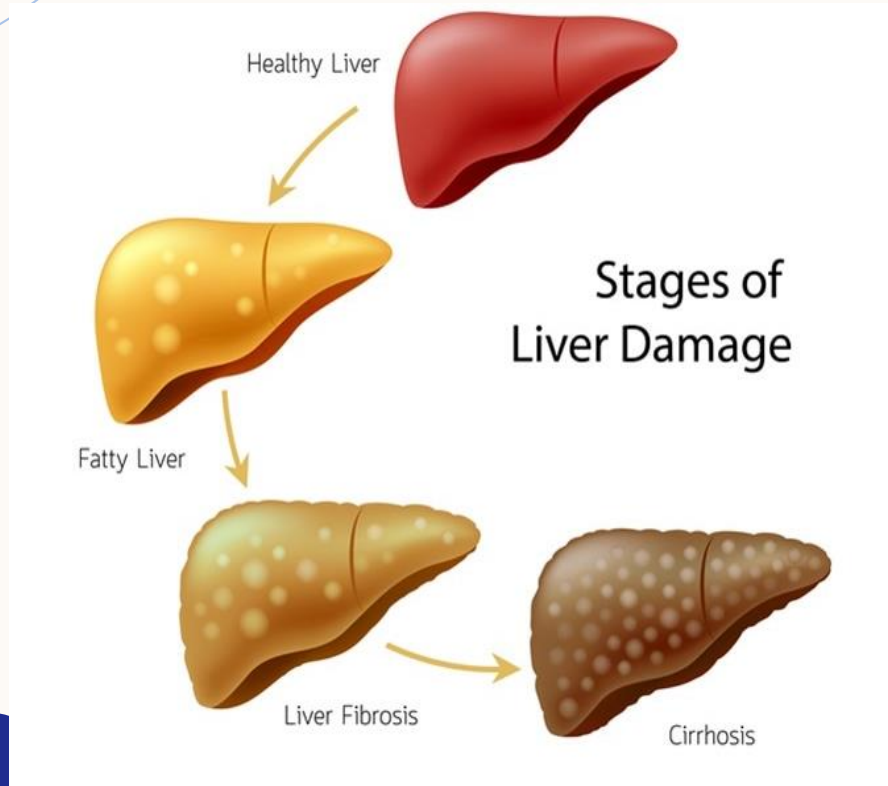
# EDUCATION AND AWARENESS

## Medical awareness

- Disease only first defined in academic papers in 1990's
- Medical graduates before 2000's had no education about it
- Most post-graduate education for doctors is sponsored by the pharmaceutical industry
- There are no drugs for MASLD
- Little or no ongoing medical education

**Medical education about MASLD often poor**

# MASLD AND SCARRING



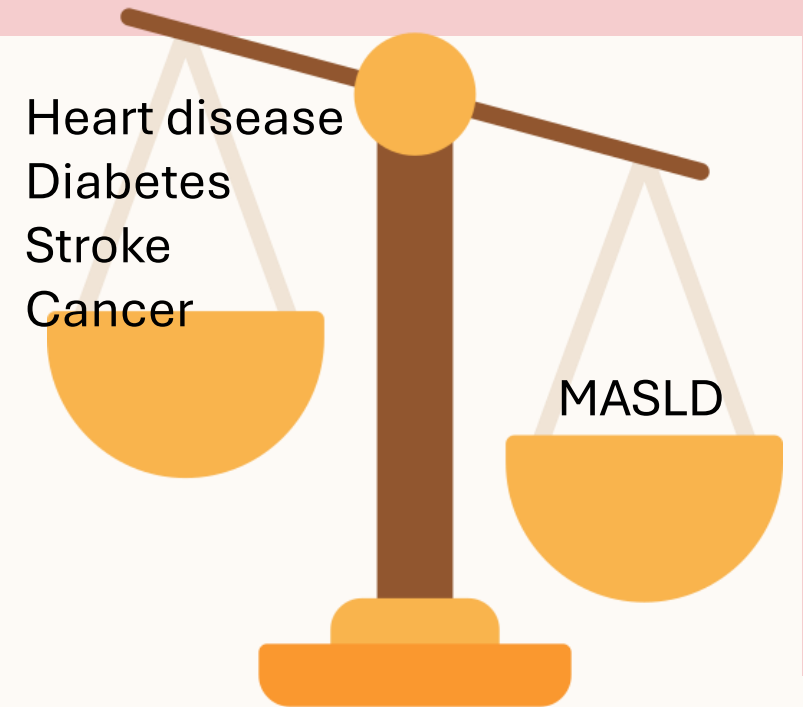
- The liver's response to long term injury is scarring
- Bloods tests do not measure scarring
- Tests to measure scarring include biopsy and non-invasive tests (NIT's)
- Medical awareness regarding scarring and how to measure it is poor
- No MBS funded specific tests for scarring in Australia
- Less accurate scarring tests exist but inaccurate and low awareness

**Issues around medical education and test availability/funding**

# MASLD AND METABOLIC HEALTH

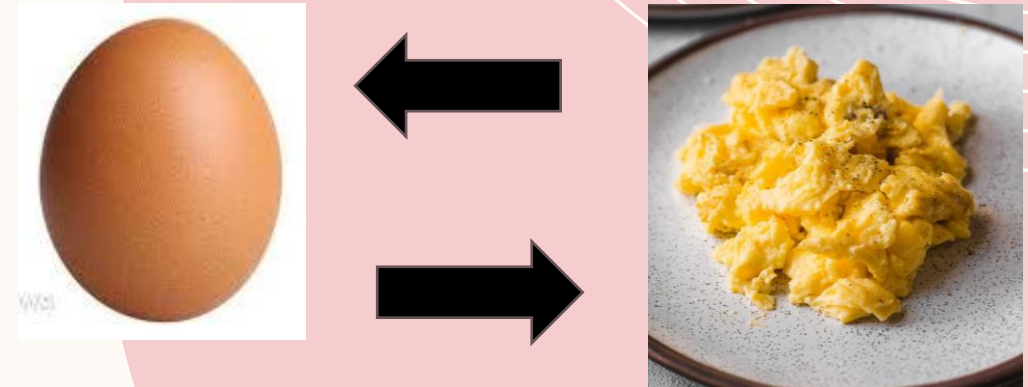
- MASLD is a measure of your general metabolic health
- It is a metabolic marker of people's general health
- Better predictor of diabetes than weight
- Strong bowel cancer risk factor
- 2-3X increased risk of heart disease

**MASLD often looked on as a disease in isolation**



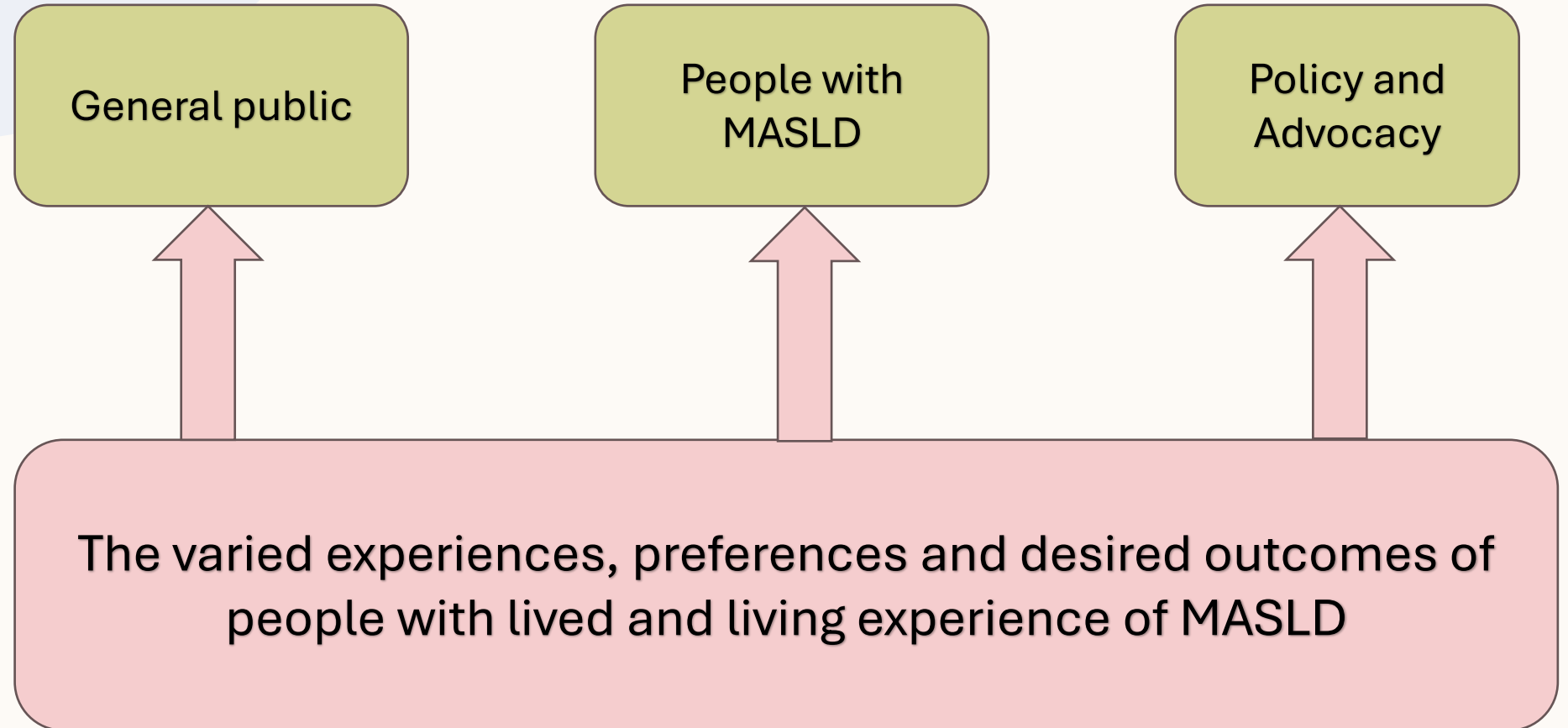
# MASLD IS REVERSIBLE

- The condition is reversible
- Condition can change markedly or resolve totally in months
- Fibrosis also (potentially) reversible

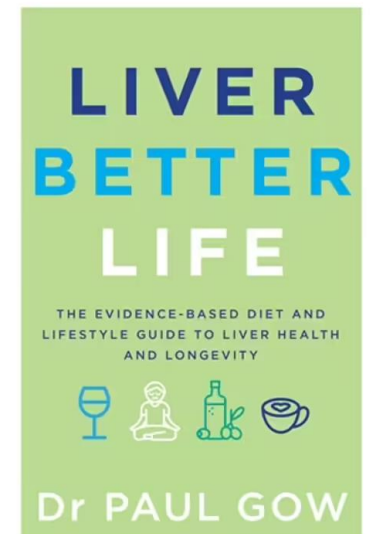
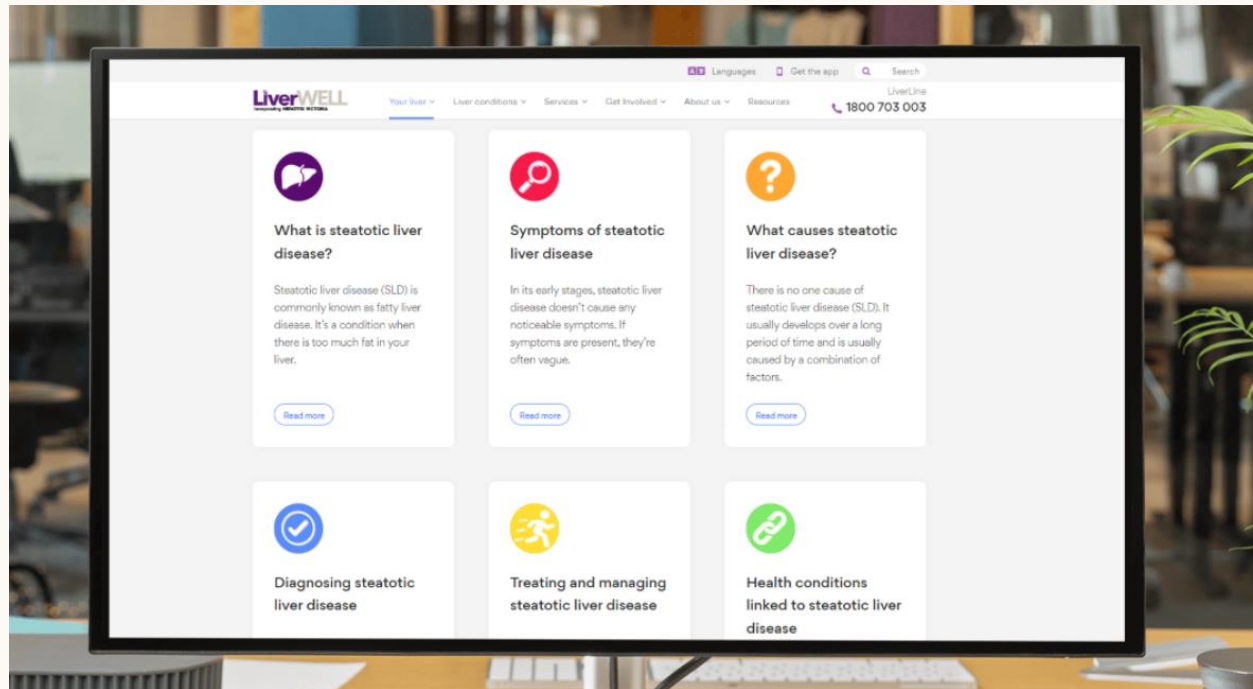


**Public awareness regarding this needs work**

# INCREASING PUBLIC AND PATIENT AWARENESS



# INFORMATION HUB





**THANK YOU!**